

# Premium Prosthetics

For All KDG Implant Connections



**TiLobe®**  
Connection



**Internal Hex**  
Connection



**Conical**  
Connection



Innovative Components. Advanced Solutions.

**GENESIS**

**PRIMA**

**PALTOP**

**NEXUS<sup>OS</sup>**

**MOLARIS**

Premium  
Redefined

# Multi-unit

Abutments

## ANGLEBase® Multi-unit Correction Solution

The ANGLEBase® multi-unit increases restorative flexibility allowing the screw access hole to be placed anywhere between 0° to 25° of angulation in a 360° radius.

## Standardized Abutment Design

Uniform component and abutment designs are available for all KDG Implant System platforms and connections.

## Subgingival Concave Profile

The prosthetically driven concave design increases soft-tissue volume, improves blood supply thus supporting an optimal emergence profile.<sup>1,2,3,4</sup>

## Reduced Bone Profiling

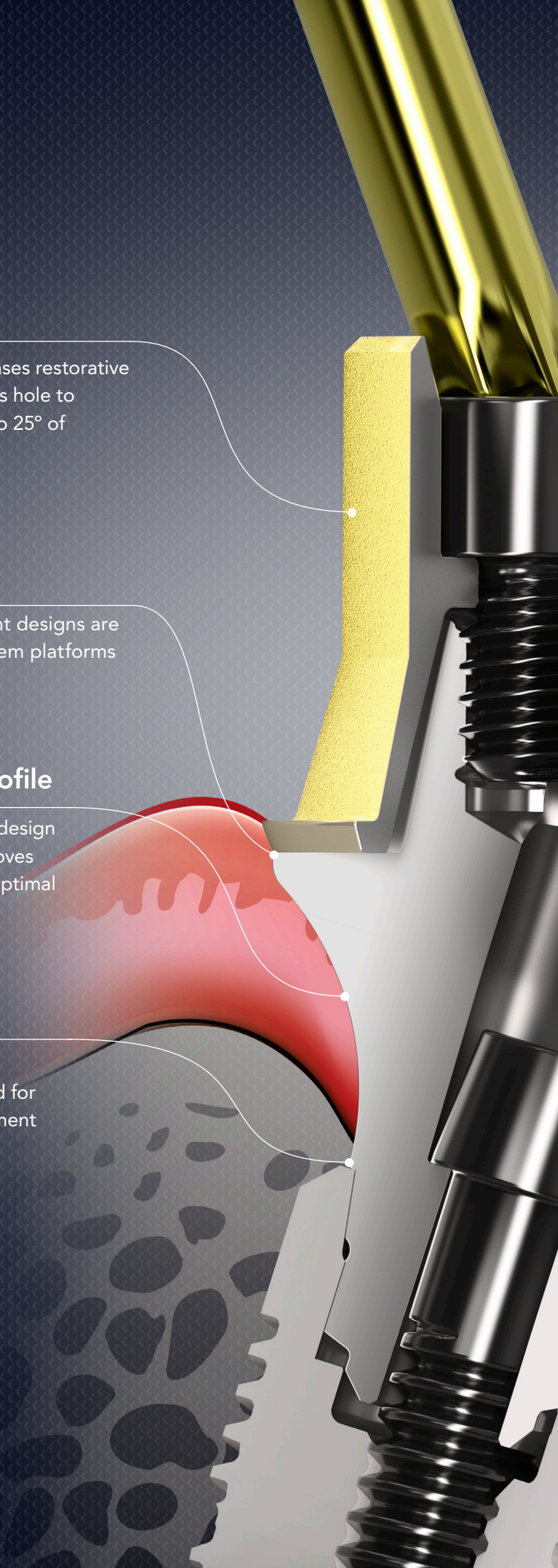
The innovative concave multi-unit abutment design reduces the need for bone profiling and simplifies abutment seating.

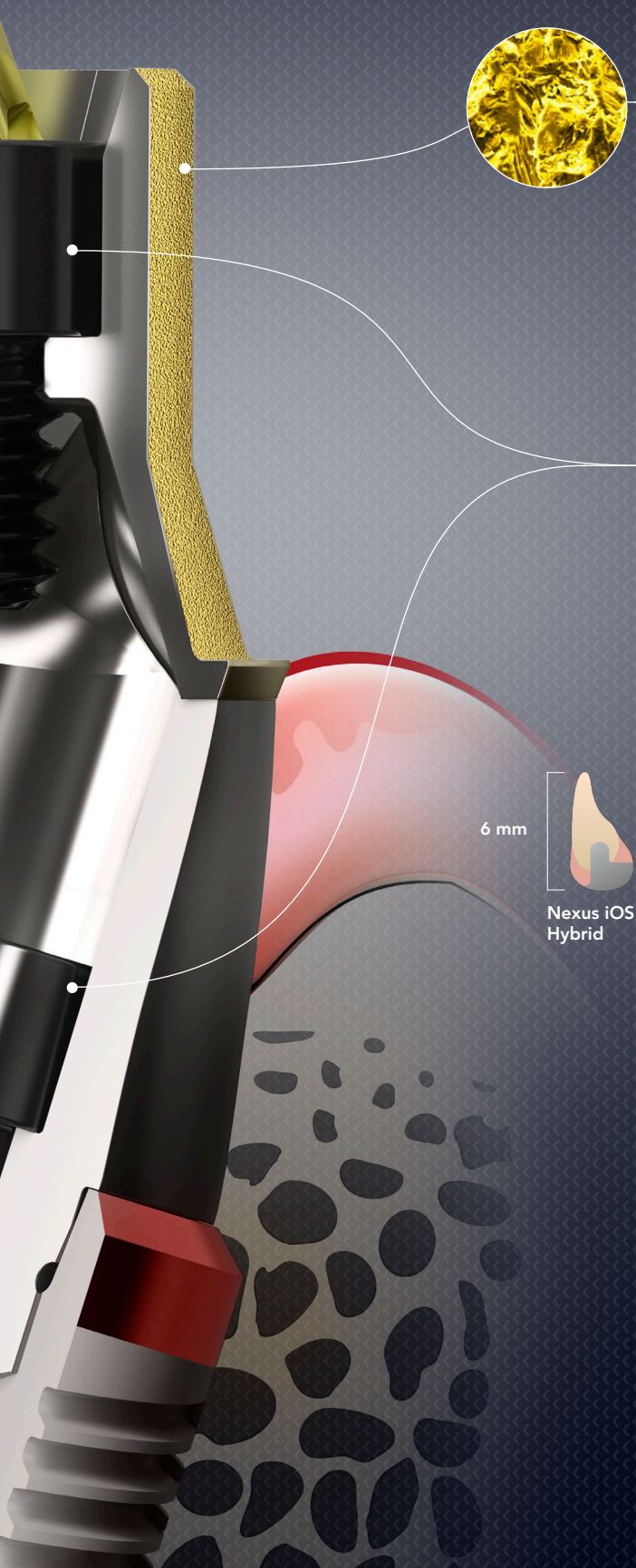
15 mm

10 mm



Temporary Coping





## SelectGrip® Restorative Surface

A surface treatment applied to the cementation area of the abutment allows for improved adherence of the final prosthetic component. Verified for up to five times greater adhesion of prosthetics compared to non-treated abutment surfaces.

## Diamond Like Carbon (DLC) Coated Screws

The high-hardness carbon layer screw has a diamond like carbon coating that provides a low friction surface for better clamping forces between the abutment and implant.

## Multi-unit Abutment Full-arch Limited Occlusal Space

The NEXUS iOS Hybrid can be built to a minimum height of 6mm with monolithic zirconia, while maintaining significant strength.

## Digital Components



Scan Body



Ti Base

Enhanced  
Biological Design

# ANGLEBase®

## ANGLEBase® Correction Solutions

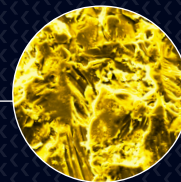
Increases restorative flexibility allowing the screw access hole to be placed anywhere between 0° to 25° of angulation in a 360° radius.

## Subgingival Concave Profile

The prosthetically driven concave design increases soft-tissue volume, improves blood supply thus supporting an optimal emergence profile.<sup>1,2,3,4</sup>

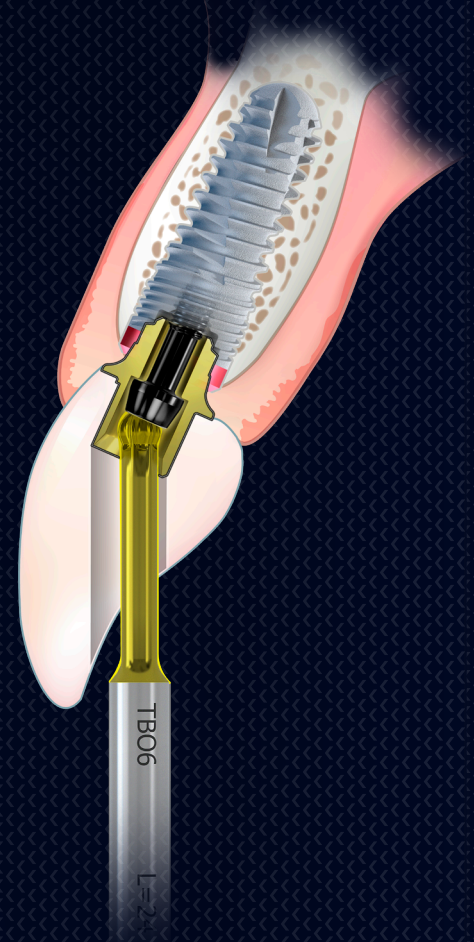
## SelectGrip® Restorative Surface

A surface treatment applied to the cementation area of the abutment allows for improved adherence of the final prosthetic component. Verified for up to five times greater adhesion of prosthetics compared to non-treated abutment surfaces.



## Diamond Like Carbon (DLC) Coated Screws

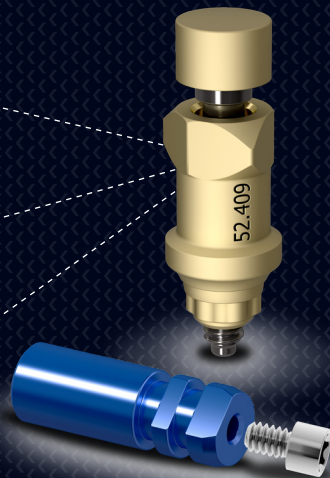
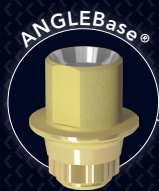
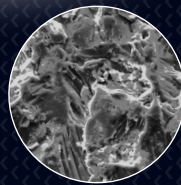
The high-hardness carbon layer screw has a diamond like carbon coating that provides a low friction surface for better clamping forces between the abutment and implant.



**Versatile**  
Restorative Options

# Digital

Components



**Improved Aesthetics**

Reduced coronal geometry and screw access hole allow for additional zirconia thickness, reinforcing the final restoration while improving aesthetics.

**Enhanced Emergence Profile**

Three diameters for the restorative platform with multiple gingival cuff heights on all connections for enhanced aesthetics outcomes.

**SelectGrip®  
Restorative Surface**

A surface treatment applied to the cementation area of the abutment allows for improved adherence of the final prosthetic component. Verified for up to five times greater adhesion of prosthetics compared to non-treated abutment surfaces.

**Uniform Components**

One analog for traditional or digital restorations.

One scan body design for zirconia hybrids or titanium blanks.

One holder for TiBlank custom abutment fabrication.

## Global Headquarters

154 Middlesex Turnpike  
Burlington, MA 01803, USA  
Tel: +1 781-328-3490  
Toll-free: 866-902-9272  
www.KeystoneDental.com

### Global KDG Offices:

## USA

KeystoneDentalGroup Irvine  
13645 Alton Pkwy  
Irvine, CA 92618, USA

## Israel

Paltop Advanced Dental Solutions, Ltd.  
Hashita 5, Industrial Park P.O. Box 3568  
Caesarea 3088900, Israel

## Australia

Osteon Medical Headquarters  
767 Springvale Road  
Mulgrave VIC 3170, Australia

## France

Osteon Medical Europe  
11 A, Bat B, rue des Aulnes  
Champagne au Mont d'or, 69410, France

## Japan

Osteon Digital Japan  
3-chōme-5-4 Nagayoshi Kawanabe  
Hirano Ward, Osaka, 547-0014, Japan

### Vertrieb / Distribution

Deutschland, Belgien,  
Niederlande, Luxemburg,  
Frankreich:

**RUNDAS GmbH**  
Amalienstr. 62  
46537 Dinslaken

Tel.: 02064 625 95 50  
Fax: 02064 625 95 80

E-Mail: [info@rundas.de](mailto:info@rundas.de)  
Internet: [www.rundas.de](http://www.rundas.de)

## References

1. Redemagni M, Lomazzo C, Cremonesi S, Garlini G, Maiorana C. Soft Tissue Stability with Immediate Implants and Concave Abutments. *European Journal of Esthetic Dentistry*. Volume 4. Number 4. Winter 2009.
2. López-López P, Mareque-Bueno J, Boquete-Castro A, Aguilar-Salvatierra Raya A, M Martínez-González J, L Calvo-Guirado J. The effects of healing abutments of different size and anatomic shape placed immediately in extraction sockets on peri-implant hard and soft tissues. *Clin Orla Implants Res*. 2016 Jan27(1) :90-6 doi:10.1111/crl.12516. Epub 2014 Oct 31.
3. Rompen E, Raepsaet N, Domken O, Touati B, Van Dooren E. Soft tissue stability at the facial aspect of gingivally converging abutments in the esthetic zone: A pilot clinical study. *The Journal of Prosthetic Dentistry*. Volume 97. Issue 6 supplement, June 2007, S119-S125.
4. Caram S, Huynh-Ba G, Schoolfield J, Jones A, Cochran D, Belser U. Biologic Width Around Different Implant-Abutment Interface Configurations. A Radiographic Evaluation of the Effect of Horizontal Offset and Concave Abutment Profile in the Canine Mandible *Int J Oral Maxillofac Implants* 2014;29:1114–1122.



[Learn More](#)