

# Premium Prosthetics DIGITAL Library **Non-FDA** For All KDG Implant Connections



TiLobe®  
Connection



Internal Hex  
Connection



Conical  
Connection

## Keystone® Ti-Abut Blanks

Keystone® Conical - Ti-Abut Blank

Keystone® Conical - Ti-Abut Blank

Keystone® Conical - Ti-Abut Blank

Keystone® Internal Hex - Ti-Abut Blank

IntHex NP Ø10mm - 60.413

IntHex SP Ø10mm - 60.414

IntHex WP Ø10mm - 60.415

IntHex WP Ø14mm - 64.415

Keystone® TiLobe® - Ti-Abut Blank

TiLobe® RD Ø10mm - 60.409

TiLobe® SD Ø10mm - 60.408

TiLobe® WD Ø10mm - 60.410

TiLobe® WD Ø14mm - 64.410

Keystone® MOLARIS TiLobe® Ti-Abut Blank

Ø7.0 - Ø14mm - 60.411

Ø8.0/9.0 - Ø14mm - 60.411



## Keystone® Ti-Bases

Keystone® Conical - Ti-base

Conical 3.5/4.5/5.5 Eng - 1mm - 16.418

Conical 3.5/4.5/5.5 Eng - 2mm - 16.418/2

Conical 3.5/4.5/5.5 Eng - 3mm - 16.418/3

Conical 3.5/4.5/5.5 NonEng - 1mm - 15.418

Conical 3.5/4.5/5.5 NonEng - 2mm - 15.418/2

Conical 3.5/4.5/5.5 NonEng - 3mm - 15.418/3

Keystone® TiLobe® - Ti-base

TiLobe® RD Eng - 1mm - 16.409

TiLobe® RD Eng - 2mm - 16.409/2

TiLobe® RD Eng - 3mm - 16.409/3

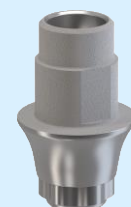
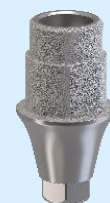
TiLobe® RD NonEng - 1mm - 15.409

TiLobe® RD NonEng - 2mm - 15.409/2

TiLobe® RD NonEng - 3mm - 15.409/3

TiLobe® SD Eng - 1mm - 16.408

TiLobe® SD Eng - 2mm - 16.408/2



TiLobe® SD Eng - 3mm - 16.408/3  
 TiLobe® SD NonEng - 1mm - 15.408  
 TiLobe® SD NonEng - 2mm - 15.408/2  
 TiLobe® SD NonEng - 3mm - 15.408/3  
 TiLobe® WD Eng - 1mm - 16.410  
 TiLobe® WD Eng - 2mm - 16.410/2  
 TiLobe® WD Eng - 3mm - 16.410/3  
 TiLobe® WD NonEng - 1mm - 15.410  
 TiLobe® WD NonEng - 2mm - 15.410/2  
 TiLobe® WD NonEng - 3mm - 15.410/3



Keystone® MOLARIS TiLobe® Ti-Base

Ø7.0 Eng - 1mm - 16.411  
 Ø7.0 Eng - 2mm - 16.411/2  
 Ø7.0 Eng - 3mm - 16.411/3  
 Ø7.0 NonEng - 1mm - 15.411  
 Ø7.0 NonEng - 2mm - 15.411/2  
 Ø7.0 NonEng - 3mm - 15.411/3  
 Ø8.0/9.0 Eng - 1mm - 16.412  
 Ø8.0/9.0 Eng - 2mm - 16.412/2  
 Ø8.0/9.0 Eng - 3mm - 16.412/3  
 Ø8.0/9.0 NonEng - 1mm - 15.412  
 Ø8.0/9.0 NonEng - 2mm - 15.412/2  
 Ø8.0/9.0 NonEng - 3mm - 15.412/3



Keystone® Internal Hex - Ti-base

IntHex NP Eng - 1mm - 16.413  
 IntHex NP Eng - 2mm - 16.413/2  
 IntHex NP Eng - 3mm - 16.413/3  
 IntHex NP NonEng - 1mm - 15.413  
 IntHex NP NonEng - 2mm - 15.413/2  
 IntHex NP NonEng - 3mm - 15.413/3  
 IntHex SP Eng - 1mm - 16.414  
 IntHex SP Eng - 2mm - 16.414/2  
 IntHex SP Eng - 3mm - 16.414/3  
 IntHex SP NonEng - 1mm - 15.414  
 IntHex SP NonEng - 2mm - 15.414/2  
 IntHex SP NonEng - 3mm - 15.414/3  
 IntHex WPØ5.7 Eng - 1mm - 16.415  
 IntHex WPØ5.7 Eng - 2mm - 16.415/2  
 IntHex WPØ5.7 Eng - 3mm - 16.415/3  
 IntHex WPØ5.7 NonEng - 1mm - 15.415  
 IntHex WPØ5.7 NonEng - 2mm - 15.415/2  
 IntHex WPØ5.7 NonEng - 3mm - 15.415/3  
 IntHex WPØ7.0 Eng - 1mm - 16.416  
 IntHex WPØ7.0 Eng - 2mm - 16.416/2



IntHex WPØ7.0 Eng - 3mm - 16.416/3  
 IntHex WPØ7.0 NonEng - 1mm - 15.416  
 IntHex WPØ7.0 NonEng - 2mm - 15.416/2  
 IntHex WPØ7.0 NonEng - 3mm - 15.416/3  
 IntHex WPØ8.0/9.0 Eng - 1mm - 16.417  
 IntHex WPØ8.0/9.0 Eng - 2mm - 16.417/2  
 IntHex WPØ8.0/9.0 Eng - 3mm - 16.417/3  
 IntHex WPØ8.0/9.0 NonEng - 1mm - 15.417  
 IntHex WPØ8.0/9.0 NonEng - 2mm - 15.417/2  
 IntHex WPØ8.0/9.0 NonEng - 3mm - 15.417/3

### Keystone® MUA Abutment

Keystone® Direct to MUA  
 Multi Unit RP  
 Multi Unit WP

Keystone® Ti-base on MUA  
 Multi Unit RP - 15.408  
 Multi Unit WP - 15.411

Keystone® Angled-base on MUA  
 Multi Unit RP - 36.007  
 Multi Unit WP - 36.054

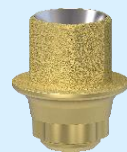


### Keystone® Angled-Bases

Keystone® Conical - Angled-Base  
 Conical 3.5/4.5/5.5 Eng- 1mm - 37.418  
 Conical 3.5/4.5/5.5 Non-Eng- 1mm - 36.418

Keystone® Internal Hex - Angled-base  
 IntHex NP Eng - 1mm - 37.413  
 IntHex NP NonEng - 1mm - 36.413  
 IntHex SP Eng - 1mm - 37.414  
 IntHex SP NonEng - 1mm - 36.414  
 IntHex WP Eng - 1mm - 37.415  
 IntHex WP NonEng - 1mm - 36.415

Keystone® TiLobe® - Angled-base  
 TiLobe® RD Eng - 1mm - 37.409  
 TiLobe® RD NonEng - 1mm - 36.409  
 TiLobe® SD Eng - 1mm - 37.408  
 TiLobe® SD NonEng - 1mm - 36.408  
 TiLobe® WD Eng - 1mm - 37.410  
 TiLobe® WD NonEng - 1mm - 36.410



Scan Body



CC



GENESIS  
Active

NP



SP



WP



SD



RD



WD



MUA RP



MUA WP



## DIM Analogs

14.107	MUA, Analog, RP
14.147	MUA Analog, WP
14.408	TL, Analog DIM with Screw, Ø3.5/3.8
14.409	TL, Analog DIM with Screw, Ø4.1/4.5
14.411	TL, Analog DIM with Screw, Ø7.0
14.412	TL, Analog DIM with Screw, Ø8.0/9.0
14.413	IH, Analog DIM with Screw, NP
14.414	IH, Analog DIM with Screw, SP
14.415	IH, Analog DIM with Screw, WP
14.416	IH Analog DIM with Screw, WP, Ø6.0 flare
14.417	IH Analog DIM with Screw, WP, Ø7.0 flare
14.418	Conical, Analog DIM with Screw, PCA